



# Wallingford Plan of Conservation and Development 2015 Update

## Transportation Steering Sub-Committee

July 29, 2015



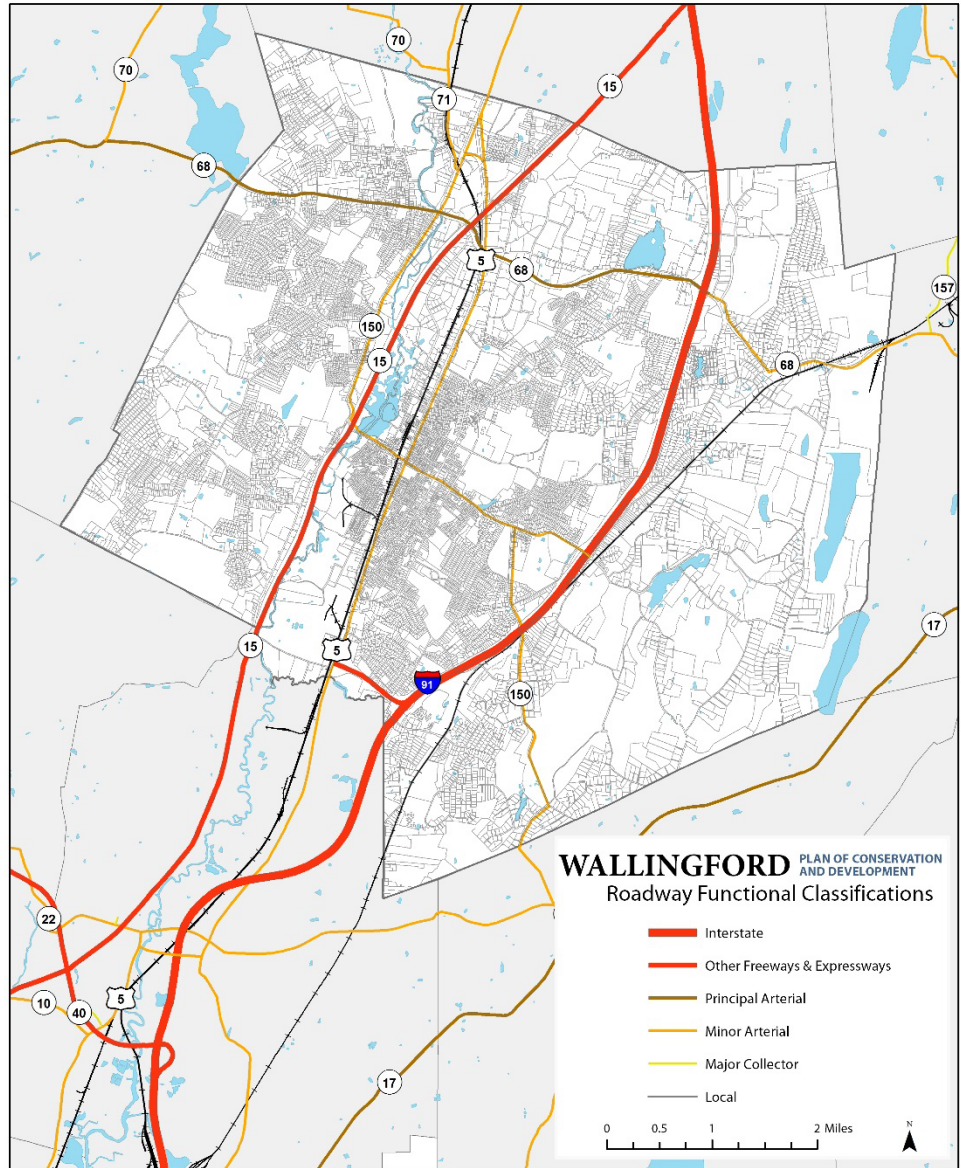
# Introduction

- **Roads, Traffic, and Parking**
  - Data Update
  - Focus Group Input
- **Bus and Rail Transit**
  - Data Update
  - Focus Group Input
- **Pedestrian & Bike Mobility**
  - Data Update
  - Focus Group Input
- **Community Survey Input**
- **Previous POCD Goals, Objectives and Recommendations**
- **Discussion – Strategizing for the Future**



# Town Road Network

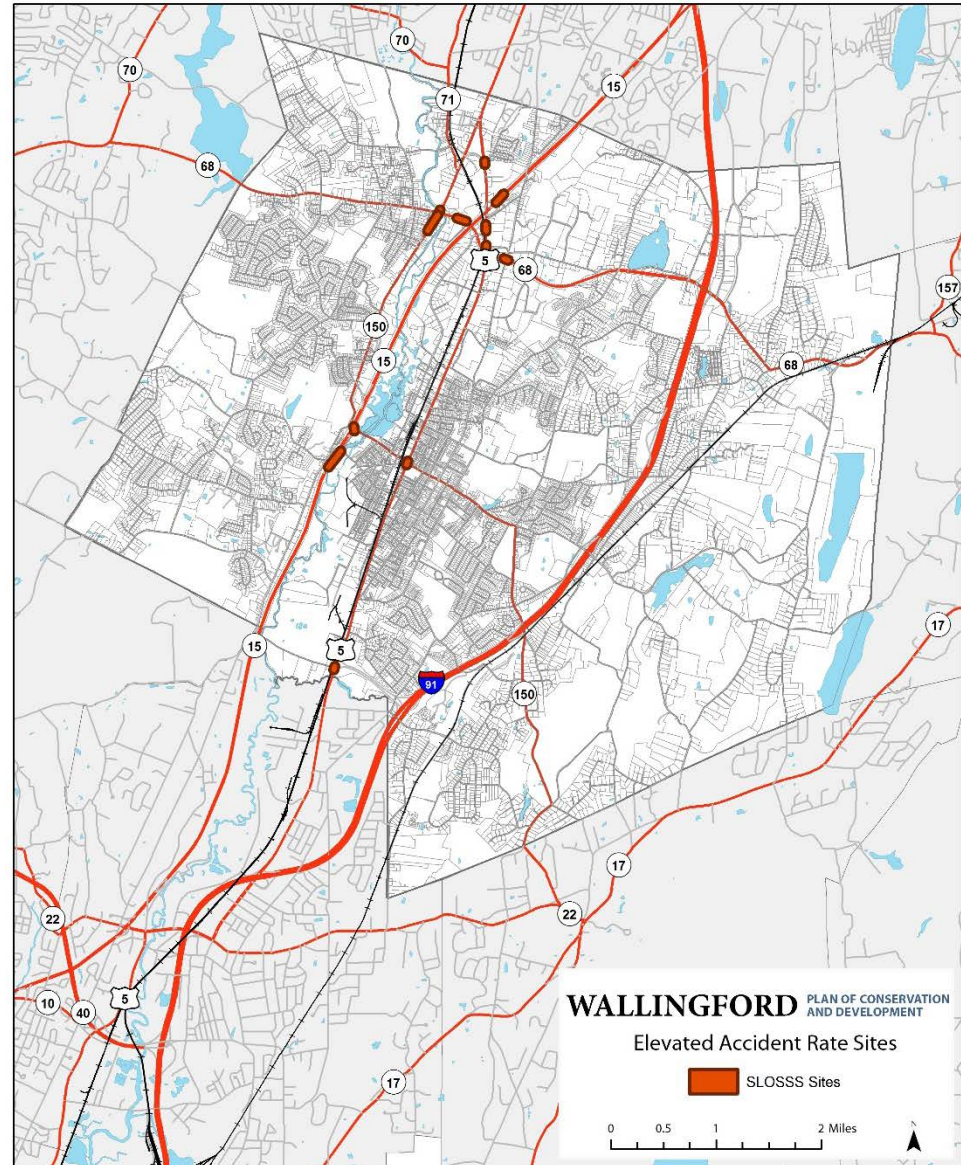
- All Connecticut roads are classified by function (design, type of circulation, level of traffic)
  - Highways
  - Arterials
  - Collectors
  - Local Streets





# Accident Hot Spots

- CT DOT measures accident occurrences relative to expectation
- Wallingford hot spots:
  - Rt. 68 near Rt. 5 and 150
  - Rt. 15 on/off ramps
  - Rt. 5 at Wharton Brook, Center St., Rt. 68, Old North Colony Rd.
  - Rt. 150 at Rt. 68



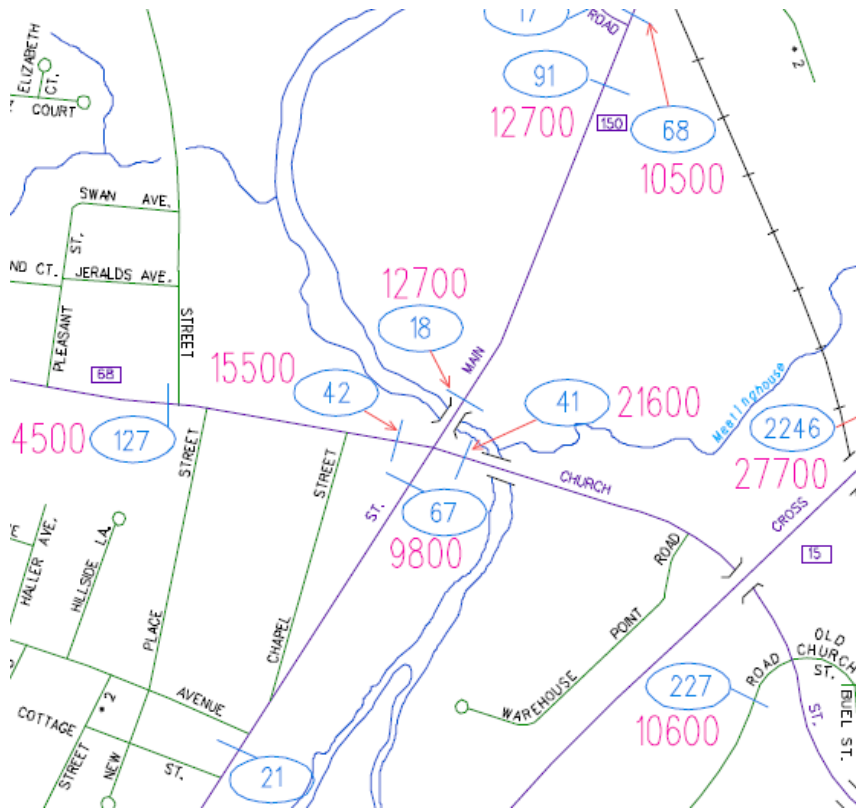




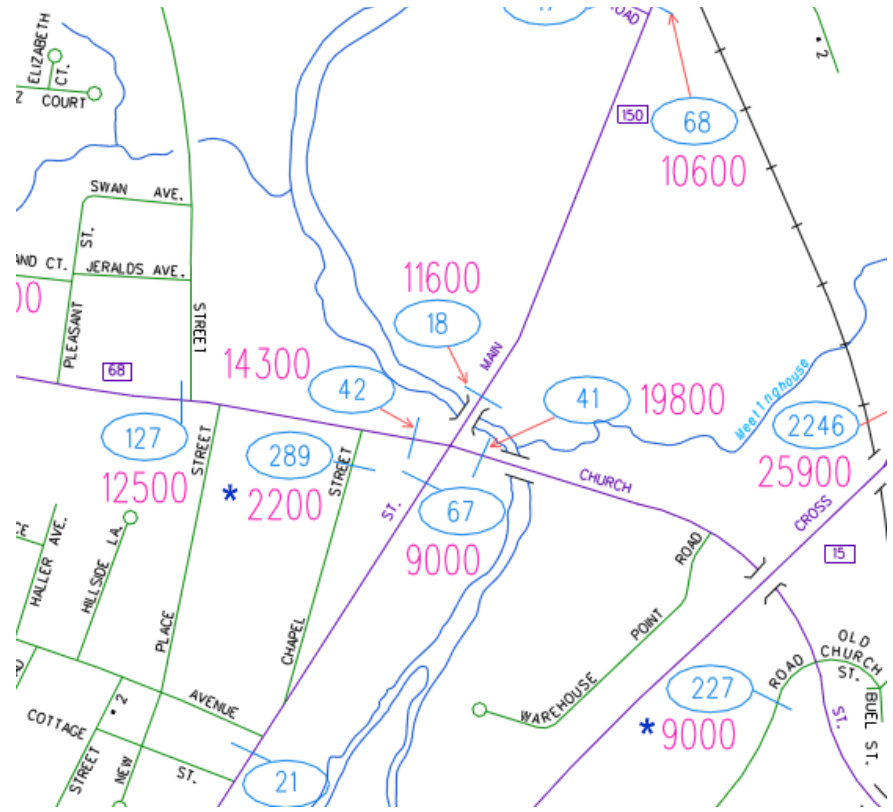
# Average Daily Traffic (ADT) Trends

## ➤ Route 150 & 68 Intersection

- Lower ADTs approaching intersection from all directions in most recent data available



2005-2007 Counts

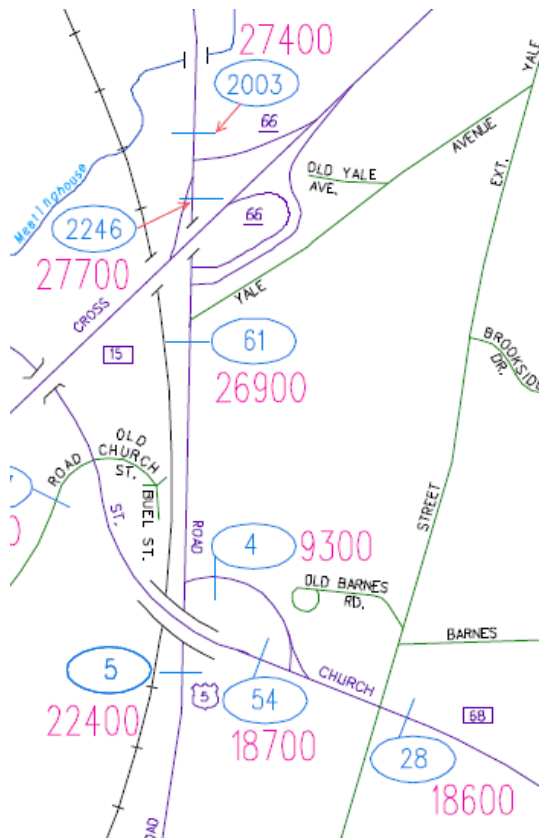


2011-2013 Counts

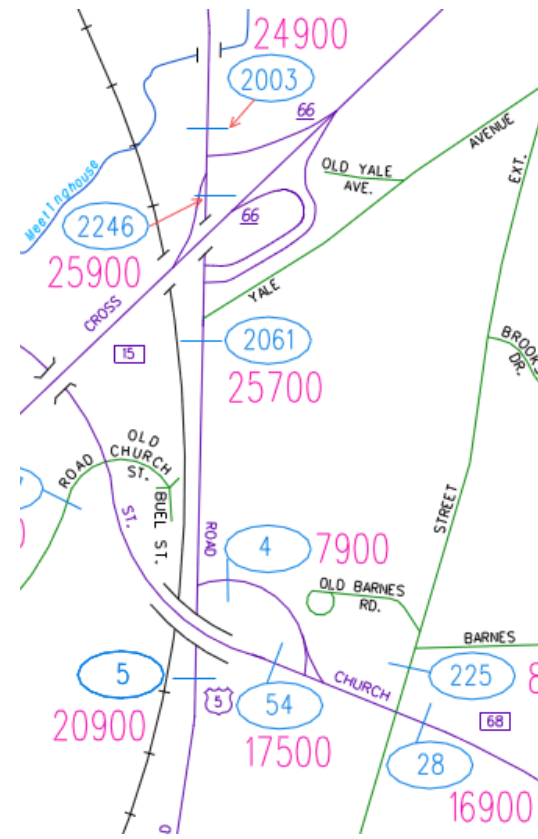


# Average Daily Traffic (ADT) Trends

- Route 5 from Route 68 to Route 15
- Lower ADTs along Routes 5 and 68



2005-2007 Counts

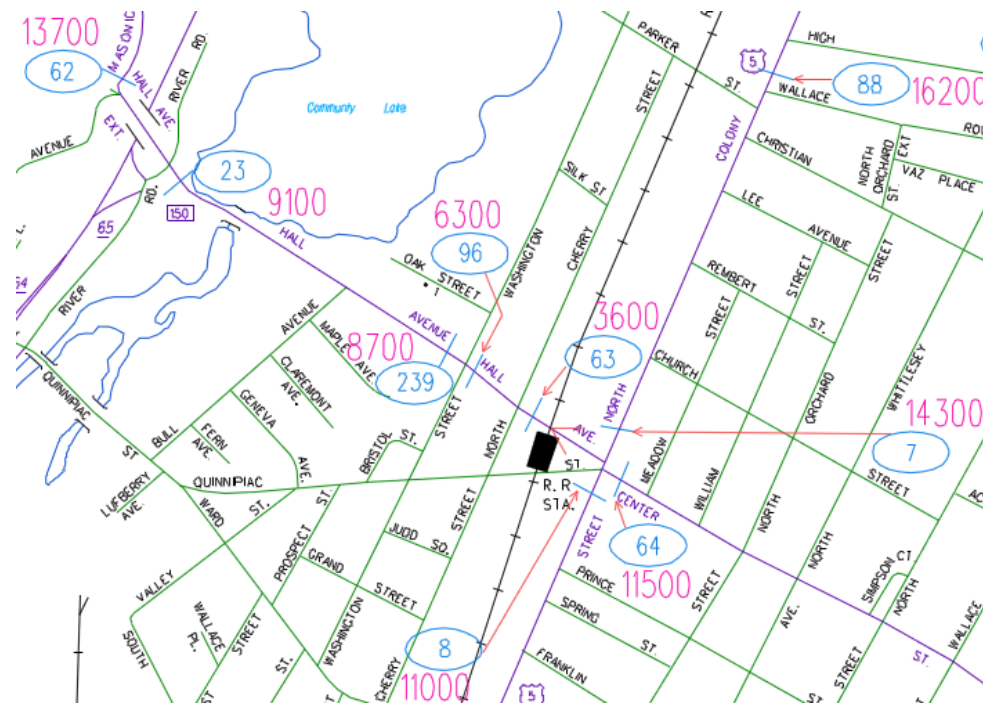


2011-2013 Counts

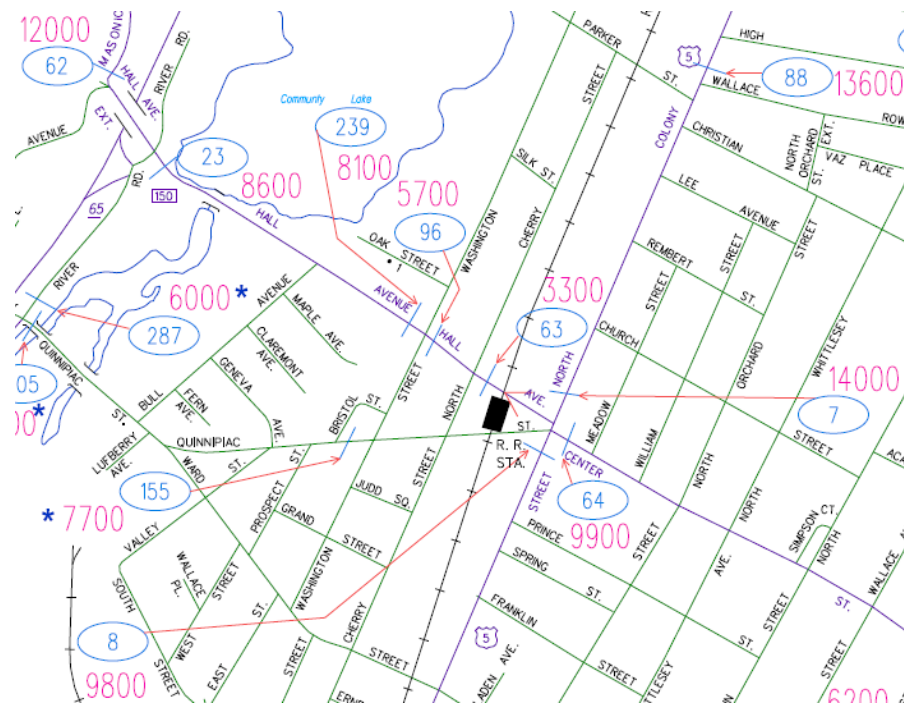


# Average Daily Traffic (ADT) Trends

- Route 5 and 150 Intersection; Route 15 Exit 65
- Lower ADTs for all approaches to 5/150 intersection
- Lower ADTs north and south from Exit 65



2005-2007 Counts



2011-2013 Counts



# Town Roads: Traffic Issues

- **Route 68: planned widening and other improvements at Rt. 150 underway (April-November, 2015)**

## Plans for Wallingford's routes 68/150 intersection expected to be done by summer

*Published: March 4, 2014 | Last Modified: March 4, 2014 07:57PM*

By Andrew Ragali Record-Journal staff

WALLINGFORD — Plans for a state Department of Transportation project meant to ease traffic and improve safety at the intersection of Routes 68 and 150 are expected to be finished this summer.

When the project was initially presented to the town by the DOT in November 2011, state officials said final design plans would be complete by October 2012, with construction expected to begin in 2013. The project is estimated to cost \$1.2 million, with 80 percent of the money coming from the federal government and 20 percent from the state.

The project is "pretty much" on schedule, Town Engineer John Thompson said. An update from the state indicated that final design work will be completed by July. The project will be advertised for public bidding this fall and construction should begin by spring 2015, he said.

Thompson said the point of the project is to "carry two lanes west in front of Westbrook Lobster up to Hanover Street."

Work is expected to be completed by fall 2015, Thompson said. New signals will also be installed, as will a sidewalk requested by the town that will run from Chapel Street to Route 150. Route 68 will be widened approximately 10 feet for a 300-foot stretch in front of Westbrook Lobster to accommodate a new lane. Construction isn't expected to significantly impact traffic, Thompson said, because most of the work will take place on the side of the road.







# Town Roads: Traffic Issues

## ➤ Route 5

### Lot of accidents

Accidents on Route 5 in Wallingford between Route 15 and Route 68:

2011 48

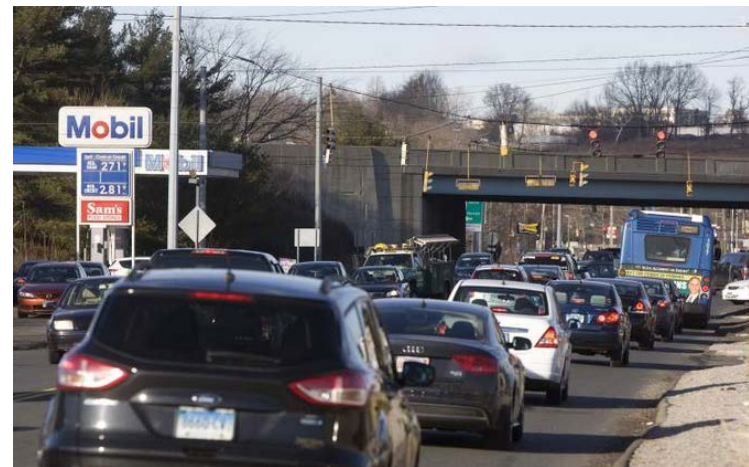
2012 57

2013 56

Top contributing factors:

- 85 accidents caused by following too closely
- 31 accidents caused by failure to grant right of way
- 13 accidents caused by traffic control violations

Source: Connecticut Department of Transportation





# Town Roads: Traffic Issues

- **Route 15 Exit 65: Improvements planned for 2016**
- **New northbound on-ramp alignment east of Hall Ave, between Rte. 15 and Community Lake**



## **Changes planned for Wallingford on-ramp to Route 15**

*Published: September 3, 2013 | Last Modified: September 3, 2013 11:12PM*  
By Andrew Ragali Record-Journal Staff

WALLINGFORD—The state Department of Transportation is developing plans to relocate the Route 15 northbound exit 65 on-ramp to improve safety on the Wilbur Cross Parkway and decrease traffic congestion on River Road and Route 150.

The \$4 million project will be 90 percent federally funded. The other 10 percent will be covered by state funds, said Susan Libatique, DOT project manager.

Work is not slated to start until spring 2016, which has at least one town official complaining that an interim project to





# Parking

- 2004 parking study identified 1,961 parking spaces in 13 block downtown area
  - 71% off-street private
  - 15% off-street municipal
  - 14% on-street
- Fewer parking spots than zoning would require, yet field surveys indicate ~50% of spots go unused during the day
  - Parking not always visible or inviting
  - Poor lighting, no space markings, no owner signage, potholes, unattractive pedestrian access





# Focus Group – Roads and Traffic

- **Bottlenecks**
  - Route 5: single lane southbound stretch around Sam's Farm Stand; south of Beaumont Road (Rick's on 5)
  - Limited east-west access across Town
- **One-way streets in Town Center: uncertainty about effects and potential alignments**
  - As example, what are pros/cons of converting Williams Street to two way? What's the patronage effect of gaining access but losing parking?
- **Commercial vehicle parking in Town Center: issues with vehicles going against flow of one ways, double parking**
  - In some cases, may be due to barriers to access at rear of buildings
- **Excess right of way on Hall Avenue: potential to expand Railroad Green?**





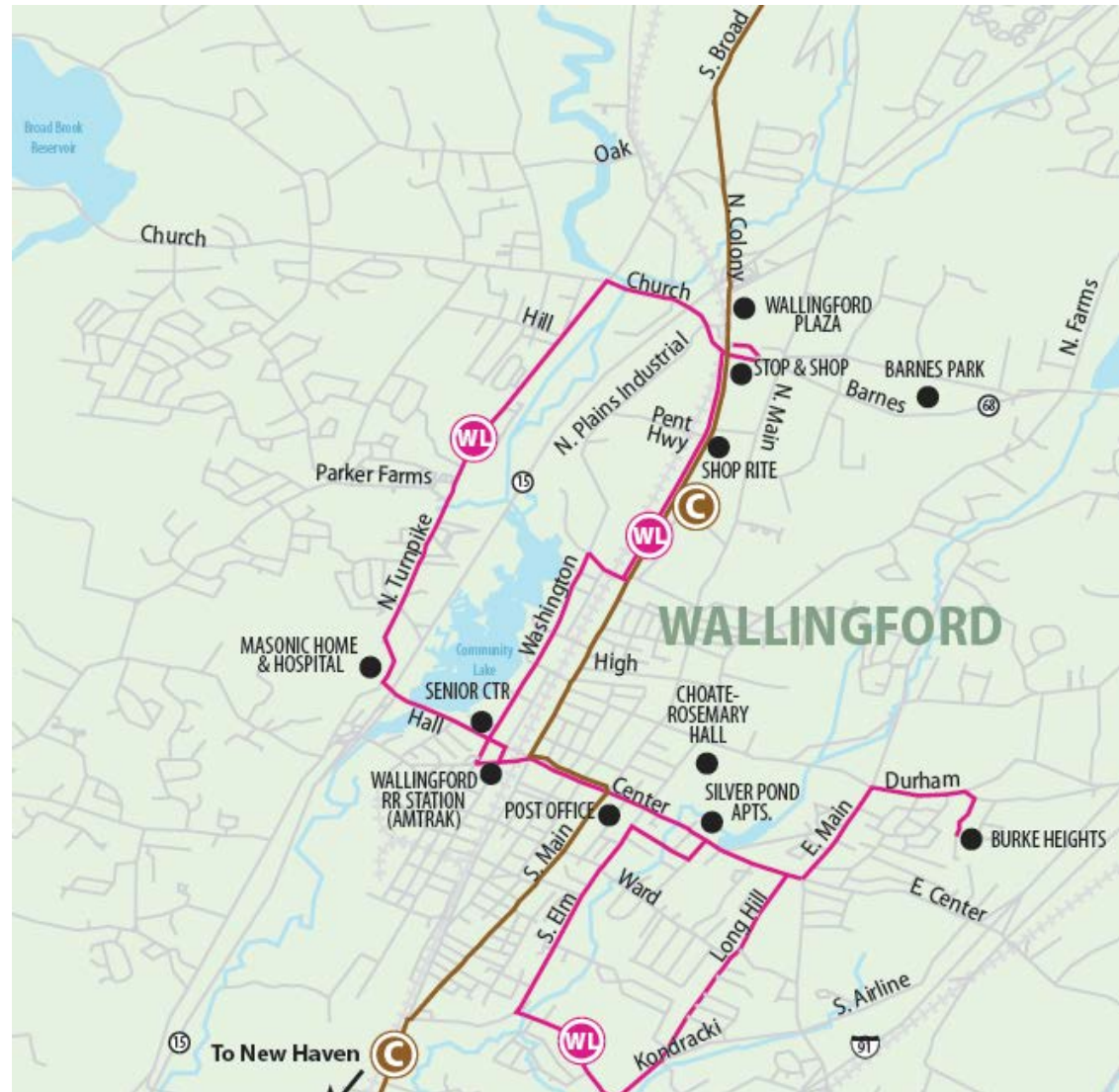
# Focus Group – Parking

- **Questions raised about soundness of 2004/2007 parking study methods**
  - Agreement that study should be updated and account for “long term temporary” lots
  - Concern that parking study justified problematic parking variances and did not account for operational losses e.g. dumpsters, patio space
- **Paid parking: uncertainty on whether economically feasible, but agreement that fiscal numbers should be examined**
  - Motivation: discourage all-day parking in prime spots, increase patronage
  - However, perception that people are becoming more willing to walk a block or two
- **Agreement on need for POCD to address downtown parking requirements, reduce need for variances, clarify shared parking rules**
- **Downtown parking signage: color-coding, directions to backup parking**
- **Schools lacking parking (especially elementary schools)**



# Bus Routes

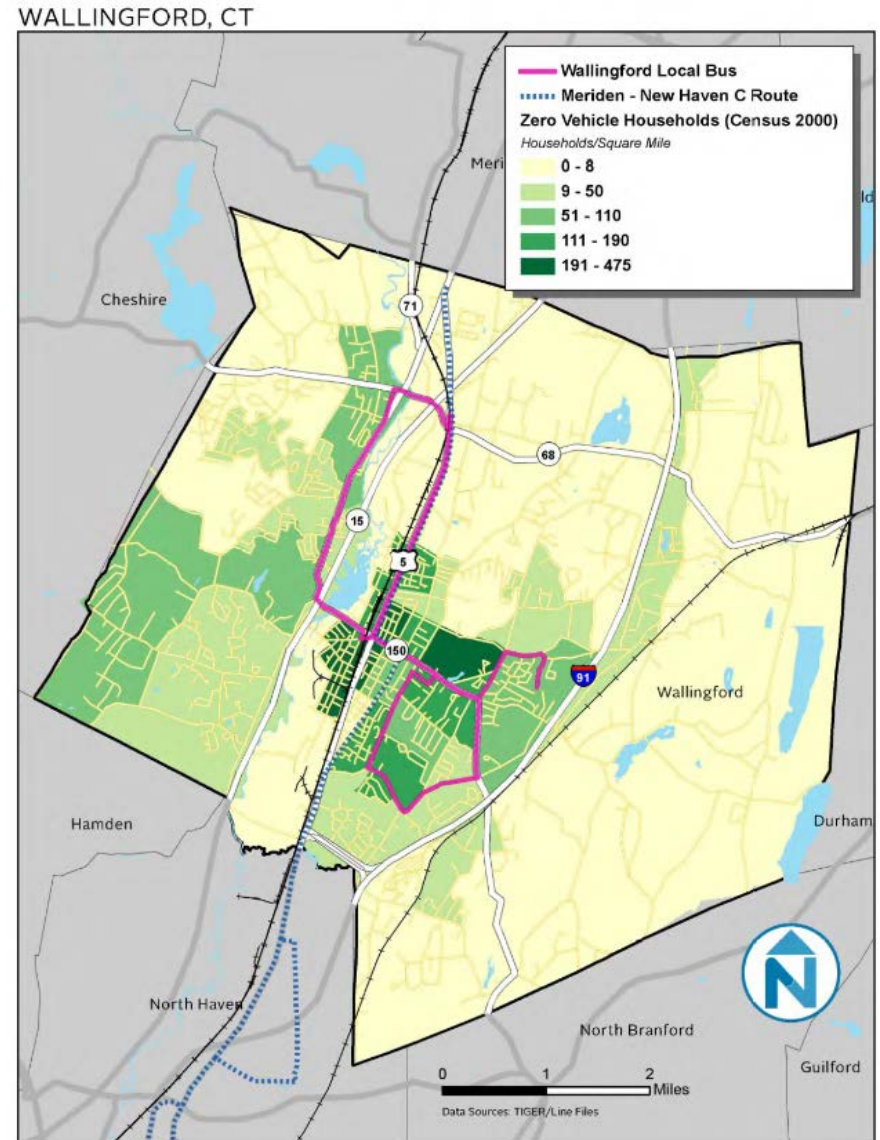
- **CT Transit Service**
  - **WL** local circulator (shown in pink)
  - **Corbin Avenue C Route** (shown in brown) from New Britain to New Haven (via Main St, Center St, and North Colony Rd)





# Bus Transit

- 2011 Wallingford Transit Study
  - Recommended change in route for WL route
  - Provided analysis of transit-dependent populations







# New Rail Station

- New train station in progress as part of the New Haven – Hartford – Springfield Line
  - New site at North Cherry St and Parker St, North Colony Rd
  - Preliminary concept: New C Route stop adjacent to south parking lot



MILONE & MACBROOM for Wallingford, CT | May 2015  
This map is intended for planning purposes only. Delineations may not be exact.

About this map: Boundaries, Hydrography, State Parks: DEEP (2011)  
SLO555 Sites: CT DOT (2012)  
Streets: ESRI (2011) Parcels: Town of Wallingford (2015)





# Focus Group – Transit Service

- **Change to Local route positive, but 9:00 to 4:30 service hours aren't viable for commuting, after school activities**
  - **Work w/ SCRCOG to get better scheduling**
- **Makes more sense to connect train station to local circulator than C route, as currently envisioned**
  - **Industrial park shuttles could be win/win: enhance sustainability programs, make commuter rail more useful**
  - **But lack of sidewalks in industrial parks mean every business needs its own stop**
  - **Could be a good economic development tool to incentivize expansion**
- **Bus shelters in poor condition, nonexistent, facing wrong way: impede traffic and harm aesthetics**



# Sidewalk Network

## ➤ Downtown/North Main Street







# Sidewalk Network

- Yalesville (Church Street): Gaps in the network





# Sidewalk Network

- Yalesville (Main Street): Gaps in the network







# Sidewalk Network

- Yalesville (Main Street): Gaps in the network

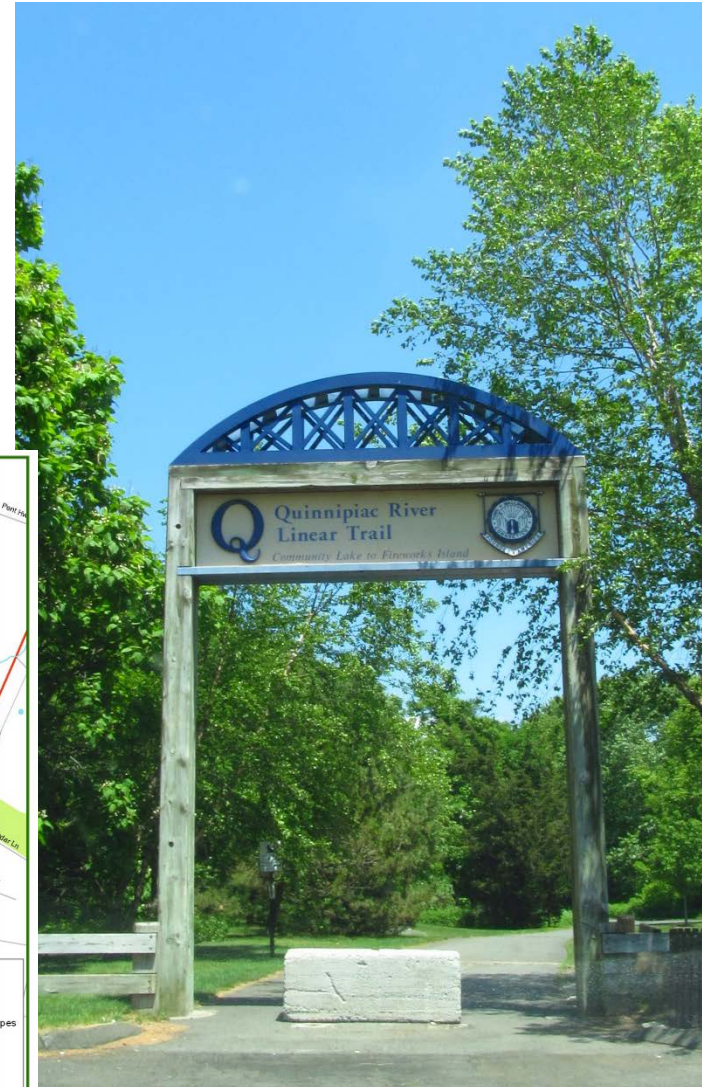
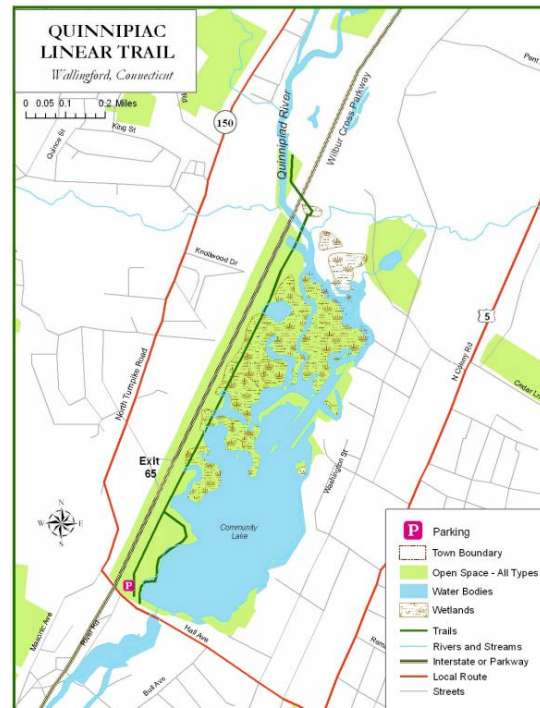




# Recreational Trails

## ➤ Quinnipiac River Linear Trail

- 1.25 mile trail for walking, biking, and skating; 6.7 mile final alignment
- Hiking trails on WLT land; CC maintained trails on Town and other lands e.g. Tyler Mills





# Focus Group – Walk & Bike

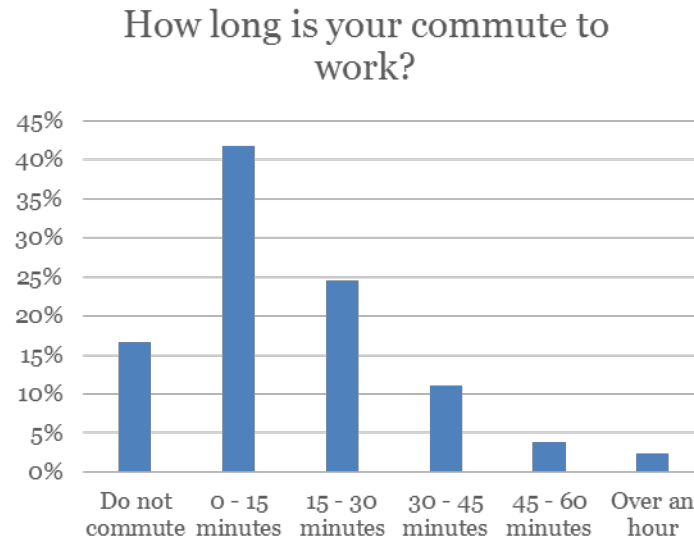
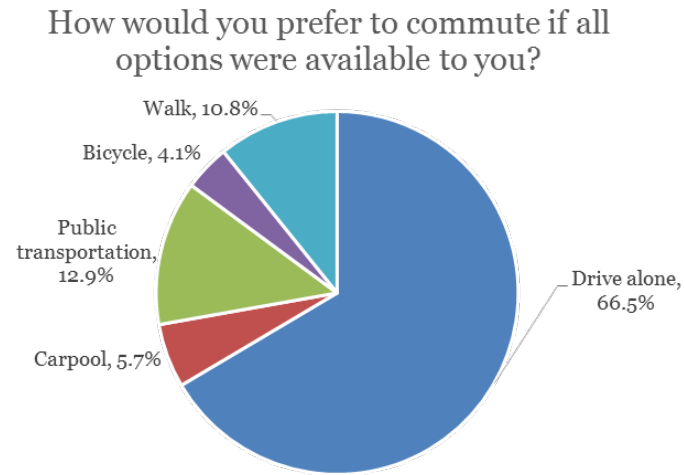
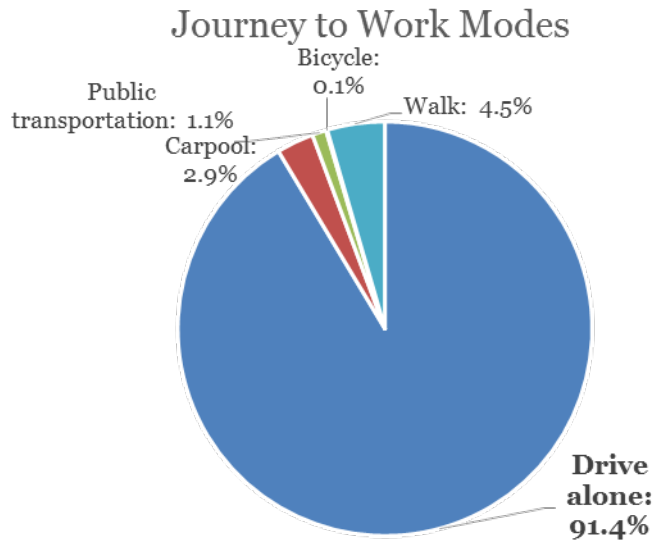
- **Downtown sidewalks generally well-connected and in good repair**
- **Priority areas for new sidewalks:**
  - **North Elm/North Street**
  - **Choate Environmental Center**
  - **Commercial strips and Yalesville**
    - **Can Linear Trail money address sidewalk linkages to trail terminus?**
  - **North Cherry north of Hall Ave**
    - **Can State money for train station be directed to sidewalk repair/beautification here and on North Colony?**
- **Better sidewalks could increase school bus efficiency, improve traffic; and reduce trip hazard & liability**
  - **Lack of funding stopped implementation of 2005 POCD recommendations**
- **Very little being done for cycling and lack of safe routes**
  - **Could require bicycle racks in parking lots**





# Survey Results

## ➤ Preliminary results from 7/13 (1,103 respondents)

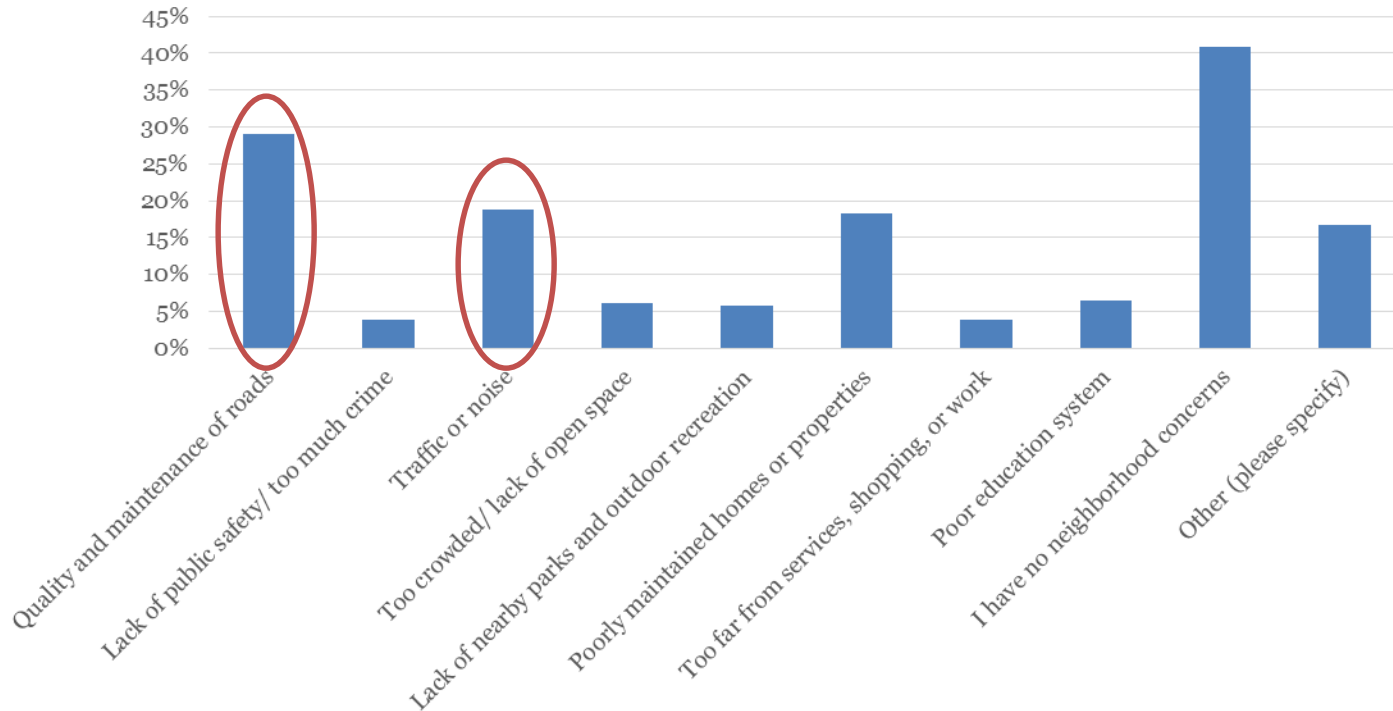






# Survey Results

Do you have any of the following concerns about your neighborhood?

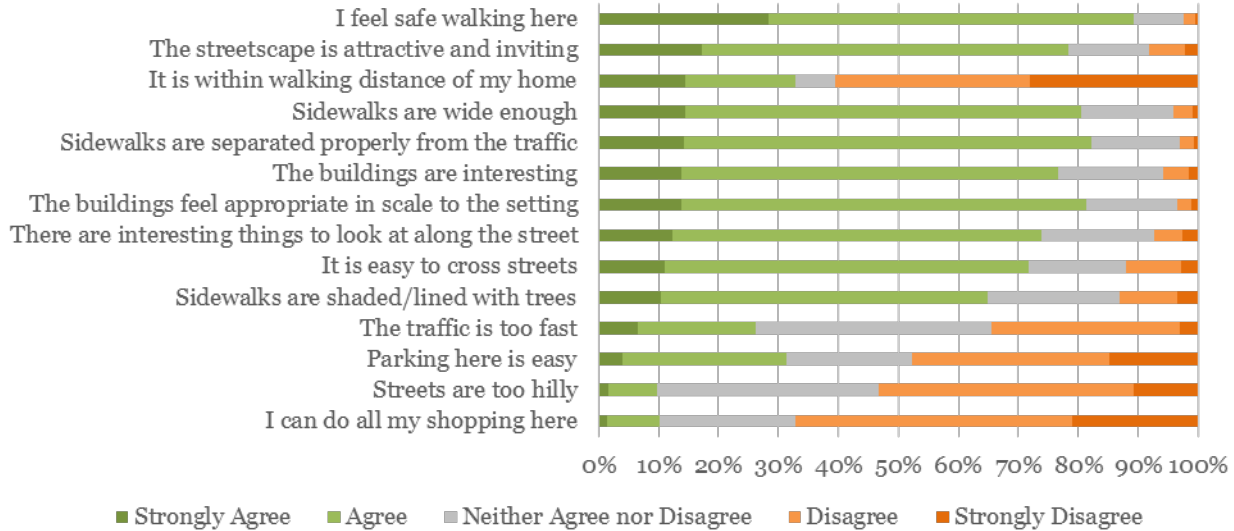


- 23 of 164 comments on this question mentioned lack of sidewalks/ sidewalk maintenance issues
- 15 of 164 mention speeding



# Survey Results

## Upper Town Center Impressions



## Lower Town Center Impressions





# Planned Improvements

- **TIP FY2015-2018 allocations:**
  - Wallingford Fixed Route (Local Circulator) (\$759,000 over four years)
  - Meriden-Wallingford ADA Service (\$2.75m over four years)
- **CIP FY2015-20 transportation-related items include:**
  - Town-Wide Paving Program (approx. \$1m annually)
  - Sidewalk installation/replacement (\$200,000 annually)
  - Signal replacement (\$100,000 annually)
  - Linear Trail Phase IV (\$200,000 design, \$1m construction)
  - Road and bridge repair/rehab: Northfield Road (\$1.4m), Northford Road (\$1m), Toelles Road (\$1m), Tuttle Ave (\$1m), South Turnpike culvert (\$1m)





# Previous POCD Recommendations

## ➤ Priority Recommendations

- Develop a plan to install sidewalk segments connecting the Town's existing sidewalk network, especially downtown and in the higher density residential zones
- Continue to lobby the State to widen Route 5 to a uniform four lanes from Meriden to North Haven



# Previous POCD Recommendations

## ➤ General Recommendations: Roads

- Monitor development on Route 68/I-91 corridor and recommend improvements as needed
- Lobby State to fund land acquisition/road widening at Rts. 150 & 68
- Work w/ State to address traffic at River Road, Rts. 15 and 5
- Work w/ State to improve traffic on Rt. 150 under RR bridge
- Evaluate capacity improvements on Rt. 5 at Rt. 150 Downtown
- Review and revise roads classifications in zoning
- Conduct traffic study on Rt. 68 from North Main to Cheshire line
- Continue rural roads policy, with widening where appropriate
- Enforce Rt. 5 corridor study recommendations: landscaping, limiting curb cuts, limiting building coverage



# Previous POCD Recommendations

## ➤ General Recommendations: Transit

- Support potential commuter rail service through Wallingford
- Encourage bus routes that service employment centers, shopping areas, and high density residential

## ➤ General Recommendations: Walkability

- Continue to require that sidewalks be installed in new developments, as appropriate
- Publicize that pedestrians have right of way in crosswalks (especially in Downtown and Choate areas)
- Continue Downtown streetscape improvements along Hall Avenue





# General Discussion

- **Goals, objectives, and recommendations from previous POCD:**
  - Where has progress been made and what has been accomplished?
  - What should the Town continue to pursue or increase efforts on?
  - What is lacking?
- **High level policy goals**
  - Help guide PZC and Council in unforeseen circumstances
- **Specific action items**
  - Priority actions, checklists/criteria for decisions



# General Discussion

- **Specific items to consider**
  - Develop priority lists for sidewalk improvements, road projects
  - Are adjustments to downtown circulation (e.g. one-ways to two-ways) a priority—if so, what areas need study?
  - Any changes needed to sidewalk construction requirements?
  - Articulate a path towards improving downtown parking:
    - Allocating funds/time to provide accurate picture of parking situation
    - Understanding feasibility of metering systems
    - Plan and implement zone or district-based parking signage and maps
    - Adjust parking requirements for downtown businesses to reduce need for variances
  - Goals for Wallingford Local circulator: increased service hours, stop at train station?